



UF-LOCO Quick Start Guide

Package Contents



UFiber loco



Wall Mount Bracket



Screws (Qty. 4)



Screw Anchors (Qty. 4)



Micro-USB Power Adapter* (5V,
1A)

* Included only in the single-pack of the UF-LOCO.

System Requirements

- Linux, Mac OS X, or Microsoft Windows 7/8/10
- Web Browser: Google Chrome (Other browsers may have limited functionality)

Before You Begin

Designing your first GPON deployment requires specific knowledge and planning. For information on GPON network design and installation, including important considerations and best practices, refer to:

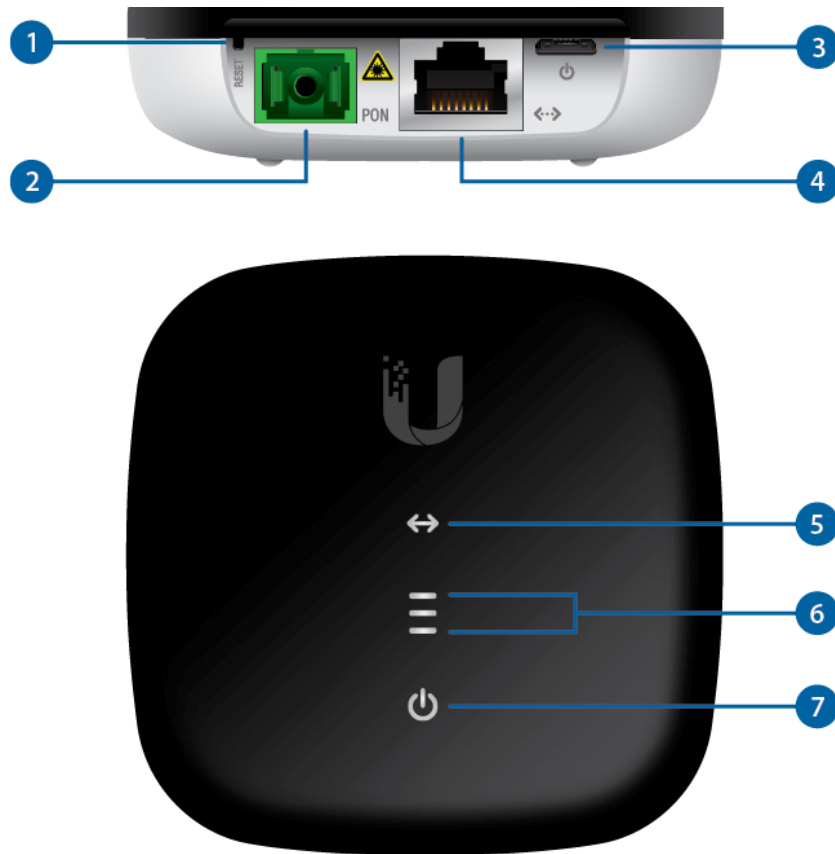
- ubnt.link/UFiber-GPON-Getting-Started
- ubnt.link/Designing-a-GPON-Network

For details on configuring UFiber devices for the first time to allow ONU LAN ports to provide connectivity, refer to: ubnt.link/UFiber-Initial-Configuration

Hardware Overview



UF-LOCO Quick Start Guide



1 Reset Button

The Reset button serves two functions for the UF-LOCO:

- **Restart** Press and release the Reset button quickly. The three signal LEDs will flash amber.
- **Restore to Factory Default Settings** Press and hold the Reset button for more than five seconds.



2 PON Port

SC/APC GPON port supports WAN connections of 2.488 Gbps downstream and 1.244 Gbps upstream.

3 Power Port

The Micro-USB Power Adapter connects to this port to provide power.

4 Ethernet Power

RJ45 Ethernet LAN port supports a 10/100/1000 Mbps connection and passive 24V PoE to power the device.



UF-LOCO Quick Start Guide

Off	Ethernet connection down
White	Ethernet connection up
6 Signal LEDs	
Off	Bootup
	Signal strength: low ≥ -28 dBm
	Signal strength: good ≥ -25 dBm
	Signal strength: strong ≥ -11 dBm
	Signal strength: too low < -28 dBm Check the quality of the fiber connection, and calculate the total optical loss of the optical splitters.
	Signal strength: too strong ≥ -8 dBm Add an optical splitter, or add a 5 or 10 dB optical attenuator.
	No signal Check the fiber cables and connectors, and ensure that the OLT functions properly.
	No authority The UF-LOCO has not been authorized or cannot communicate with the OLT. Check passwords and OLT settings.
7 Power LED	



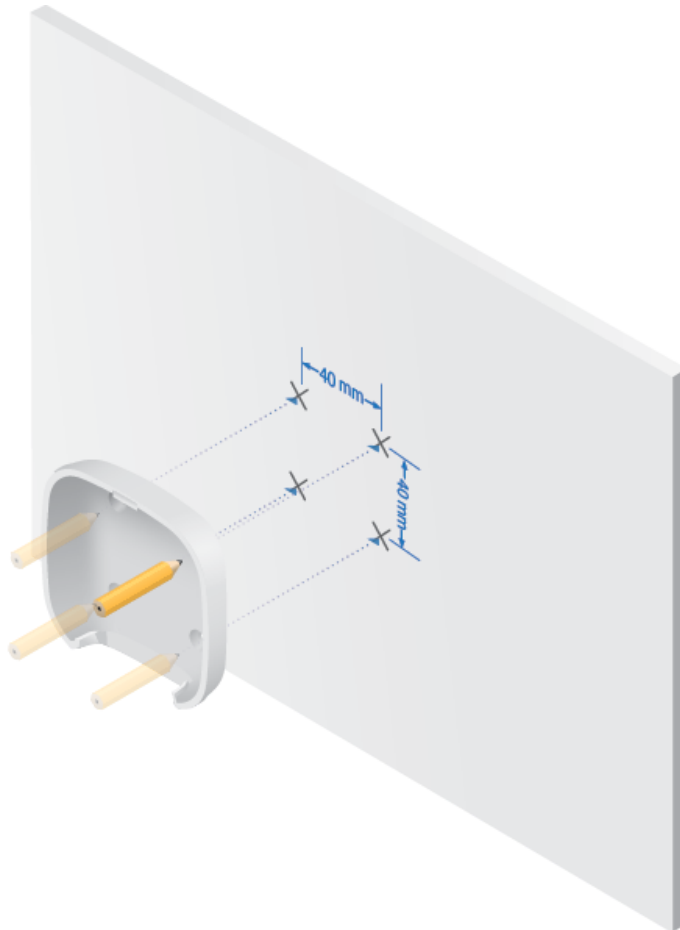
White

Power on

Hardware Installation

Wall Mounting

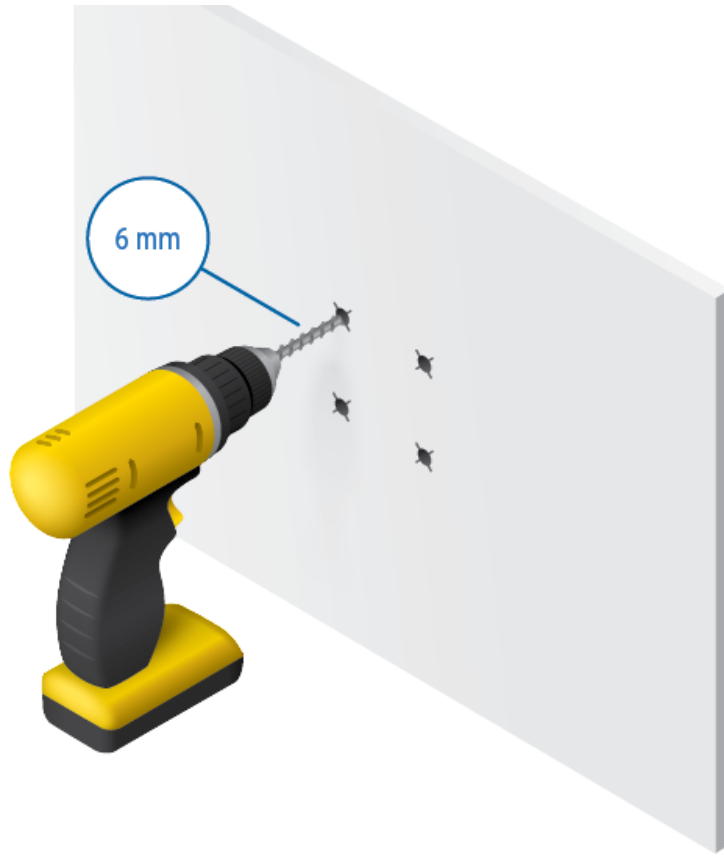
1.



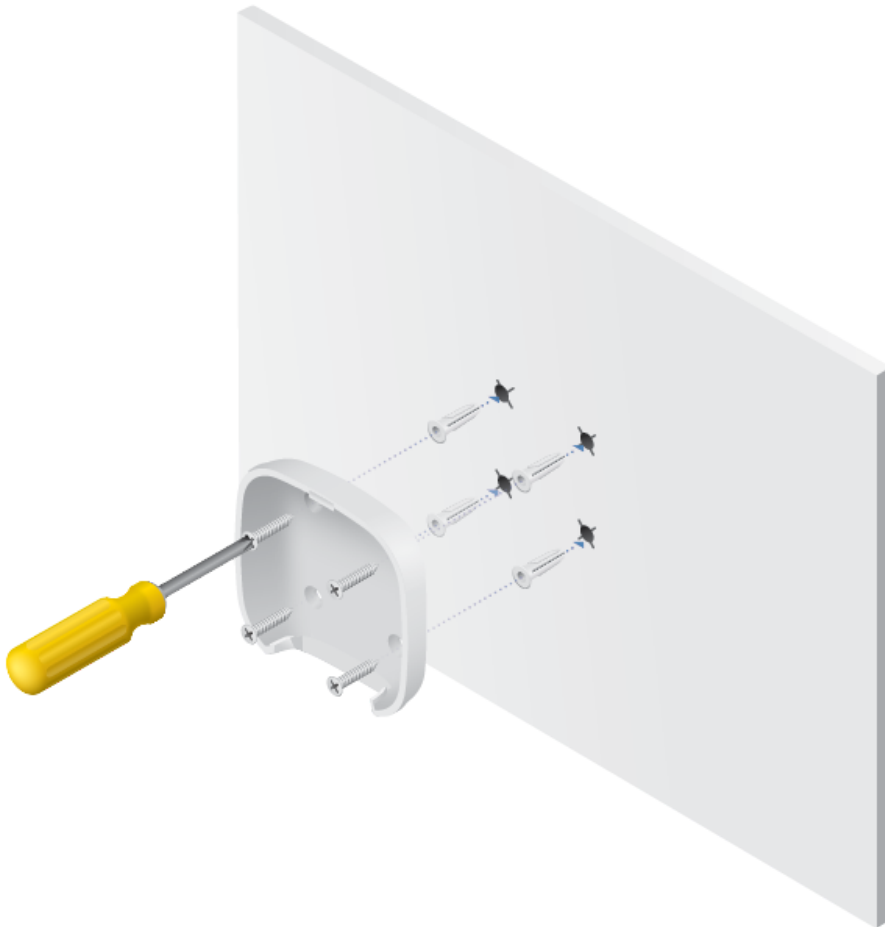
2.



UF-LOCO Quick Start Guide



3.



4.



UF-LOCO Quick Start Guide



Connecting Fiber



WARNING: Never look directly into the ends of fiber or modules. The emitted light could cause damage to the eye.



WARNING: Until ready for use, keep modules and fiber patch cables covered using the included protective caps to ensure the connections stay clean.



WARNING: DO NOT connect the device directly to a UFiber GPON module (UF-GP-B+ or UF-GP-C+). Doing so will damage the device optics. Ensure that the device's received signal level never exceeds -8 dBm. Use a UFiber PLC Splitter to add attenuation as needed.



UF-LOCO Quick Start Guide



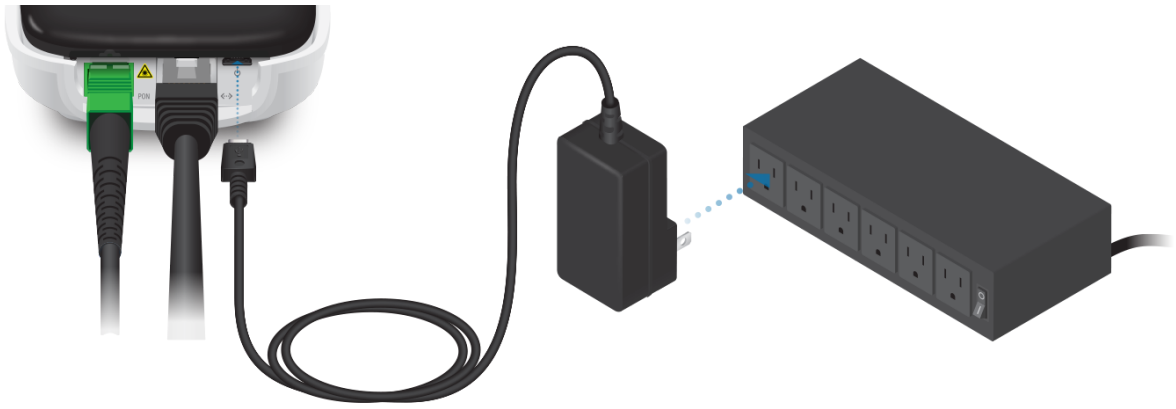
Connecting LAN



Connecting Power



UF-LOCO Quick Start Guide



OR



Note: The airCube provides Wi-Fi connectivity with PoE passthrough, so it is the ideal complement to the UF-LOCO for CPE installations.



OR



WARNING: The switch port must comply with the power specifications listed in this Quick Start Guide.



UF-LOCO Quick Start Guide



Accessing the Configuration Interface

1. Ensure that your computer (or other host system) is connected to the device.
2. Configure the Ethernet adapter on your host system with a static IP address on the 192.168.1.x subnet.
3. Launch your web browser. Type `http://192.168.1.1` in the address field. Press enter (PC) or return (Mac).



4. Enter `ubnt` in the Username and Password fields. Click Login.

U Fiber

Login

Please login to manage your device.

Username

Password

By logging in, you agree to the [Terms of use](#).

LOGIN


Customize settings as needed. For more information, refer to the UFiber resources, which are available at: <http://ubnt.link/UFiber-Support>

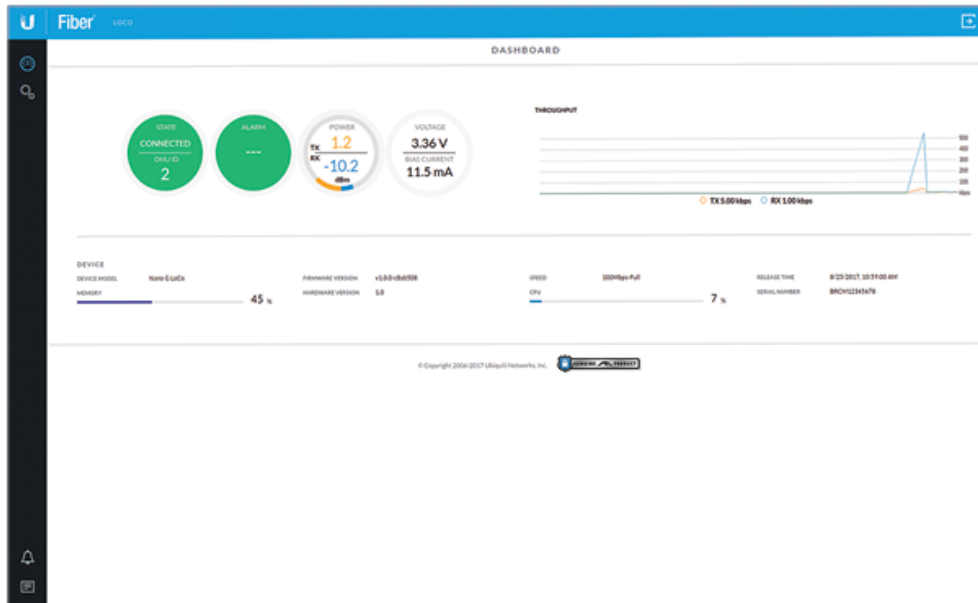
OLT Compatibility Profiles



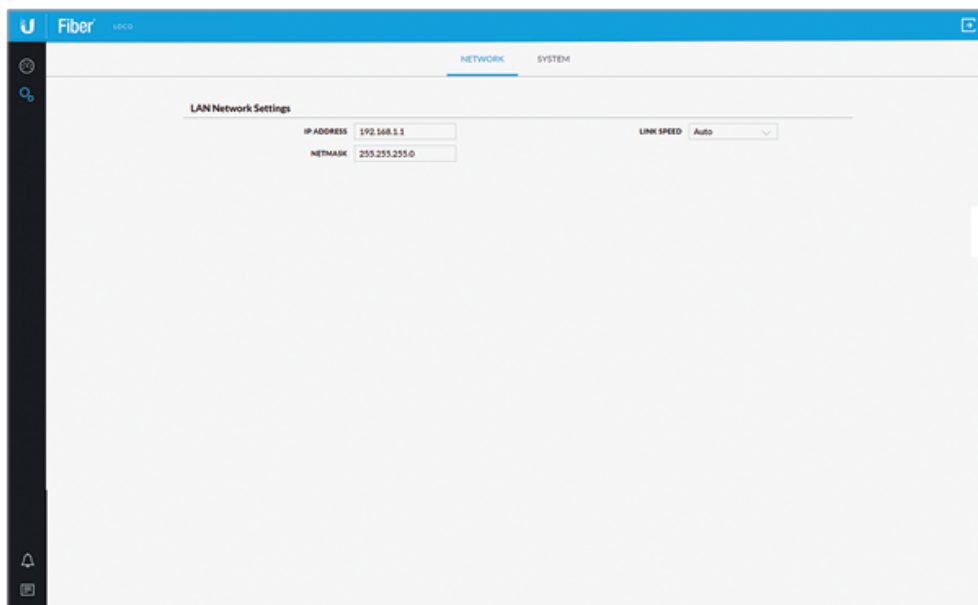
UF-LOCO Quick Start Guide

UFiber OLT. For other brands, manually select Profile 2, 3, or 4.

1. Log into the UFiber Configuration Interface.
2. Go to Settings .



3. On the Network screen, click the System tab.

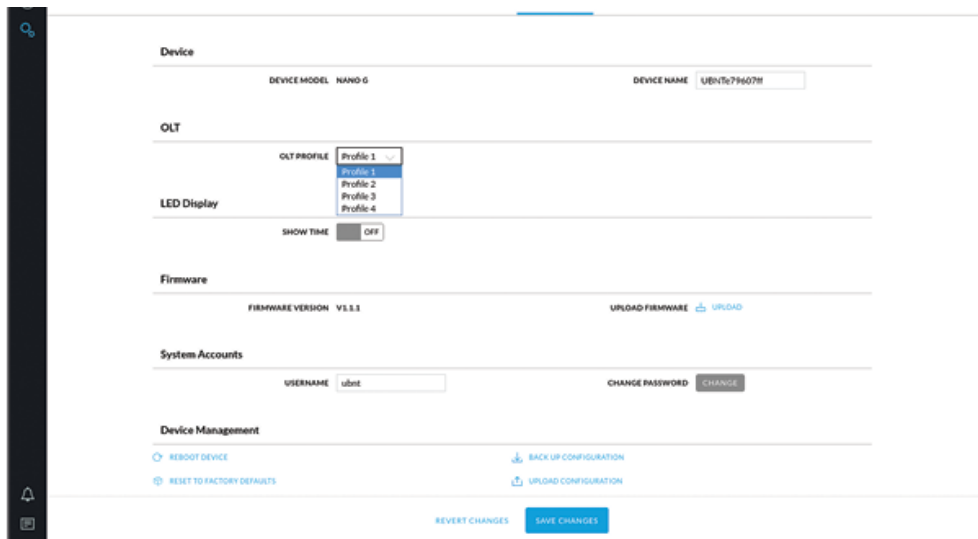


4. Select the appropriate profile from the OLT Profile drop-down menu:
 - **Profile 1** Ubiquiti UFiber OLT
 - **Profile 2** Other brands
 - **Profile 3** Other brands
 - **Profile 4** Other brands



Note: For more information, visit: <https://ubnt.link/Supported-3rd-Party-OLTs>

UF-LOCO Quick Start Guide



5. Click Save Changes.

The device will automatically restart with the new profile.

Specifications

UF-LOCO	
Dimensions	76.5 x 76.5 x 26.4 mm (3.01 x 3.01 x 1.04")
Weight	77 g (2.72 oz)
Networking Interfaces	(1) SC/APC, GPON WAN (1) RJ45, Ethernet LAN
Networking Interface Speeds	(1) GPON WAN, ITU G.984, 2.488 Gbps Downstream, 1.244 Gbps Upstream (1) GbE LAN, 10/100/1000 Mbps
Management Interface	In-Band Ethernet PON
Normal Optical Power Range	TX (Class B+): 1.5 to 5 dBm RX: -28 to -8 dBm
Power Method	Micro-USB: 5V, 1A 24V Passive PoE (Pins +4, 5; -7, 8)
Power Supply	Micro-USB Power Adapter*: 5V, 1A
Max. Power Consumption	3.5W
Supported Voltage Range	4.7 to 5.3V
Processor Specs	MIPS-32, 240 MHz
Memory Information	128 MB DDR3

UF-LOCO Quick Start Guide

Parameter	Value
Operating Temperature	-10 to 45° C (14 to 113° F)
Operating Humidity	10 to 90% Noncondensing
Certifications	CE, FCC, IC

* Included only in the single-pack of the UF-LOCO.

Safety Notices

1. Read, follow, and keep these instructions.
2. Heed all warnings.
3. Only use attachments/accessories specified by the manufacturer.



WARNING: To reduce the risk of fire or electric shock, do not expose this product to rain or moisture.



WARNING: Do not use this product in location that can be submerged by water.



WARNING: Avoid using this product during an electrical storm. There may be a remote risk of electric shock from lightning.



WARNING: CLASS 1 LASER PRODUCT - Do not look into the ends of the fiber optic cable or SFP modules while converters are powered.

Electrical Safety Information

1. Compliance is required with respect to voltage, frequency, and current requirements indicated on the manufacturer's label. Connection to a different power source than those specified may result in improper operation, damage to the equipment or pose a fire hazard if the limitations are not followed.
2. There are no operator serviceable parts inside this equipment. Service should be provided only by a qualified service technician.

Limited Warranty

ui.com/support/warranty

The limited warranty requires the use of arbitration to resolve disputes on an individual basis, and, where applicable, specify arbitration instead of jury trials or class actions.

Compliance

FCC

Changes or modifications not expressly approved by the party responsible for compliance could void the user's authority to operate the equipment.



UF-LOCO Quick Start Guide

1. This device may not cause harmful interference, and
2. This device must accept any interference received, including interference that may cause undesired operation.

This equipment has been tested and found to comply with the limits for a Class A digital device, pursuant to Part 15 of the FCC Rules. These limits are designed to provide reasonable protection against harmful interference when the equipment is operated in a commercial environment. This equipment generates, uses, and can radiate radio frequency energy and, if not installed and used in accordance with the instruction manual, may cause harmful interference to radio communications. Operations of this equipment in a residential area is likely to cause harmful interference in which case the user will be required to correct the interference at his own expense.

ISED Canada

CAN ICES-3(A)/NMB-3(A)

Australia and New Zealand



Warning: This equipment is compliant with Class A of CISPR 32. In a residential environment this equipment may cause radio interference.

CE Marking

CE marking on this product represents the product is in compliance with all directives that are applicable to it.



WEEE Compliance Statement

Declaration of Conformity

Online Resources





UF-LOCO Quick Start Guide

© 2020 Ubiquiti Inc. All rights reserved.