



## UAP-BeaconHD Quick Start Guide

### Package Contents



UAP-BeaconHD



Wall Plate (Optional)

### System Requirements

- If a controller is used: UniFi Network Controller software v5.11 or newer (running on a UniFi Cloud Key or other server), available at: [ui.com/download/unifi](https://ui.com/download/unifi)
- (1) UniFi Access Point\* or Dream Machine for the UAP-BeaconHD to mesh to
- Either of the following is required:
  - iOS or Android™ Mobile Device with UniFi Network App Installed
  - Web Browser: Google Chrome (Other browsers may have limited functionality)

\* 5 GHz required.

### Hardware Overview





## UAP-BeaconHD Quick Start Guide

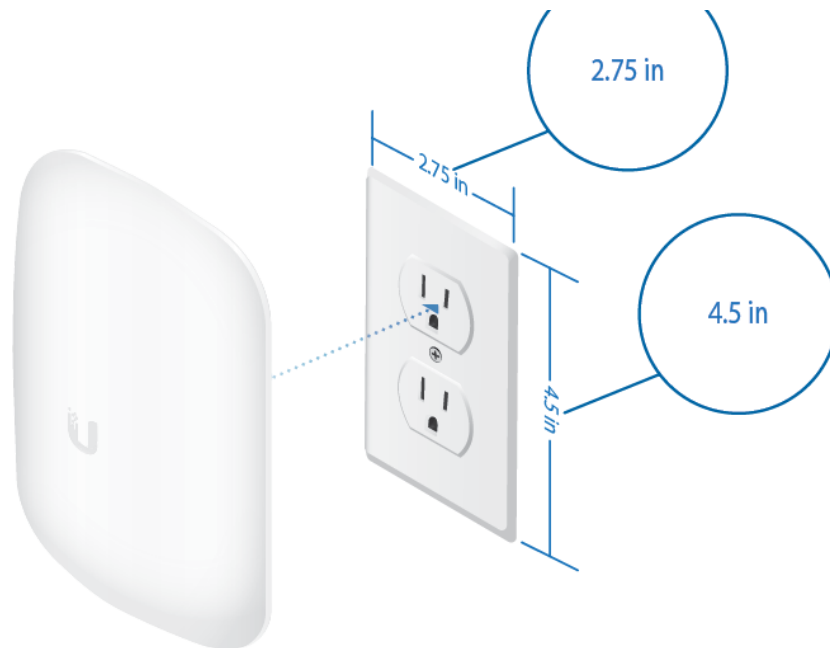


<b>1 System LED</b>	
Flashing White	Initializing.
White	Factory defaults, waiting for integration.
Alternating White/Blue	Device is busy; do not touch or unplug it. This usually indicates that a process such as a firmware upgrade is taking place.
Blue	Successfully integrated into a network and working properly.
Flashing Blue	This is used to locate a device.  When you click Locate in the UniFi Network Controller software, the LED will flash blue. The software will also display the location of the device on the map.
<b>2 Reset Button</b>	
Resets to factory defaults. The device should be running after bootup is complete. Press and hold the Reset button for about 10 seconds until the LED starts flashing and then becomes solidly lit. After a few seconds, the LED will turn off, and the device will automatically reboot.	

## Connecting Power



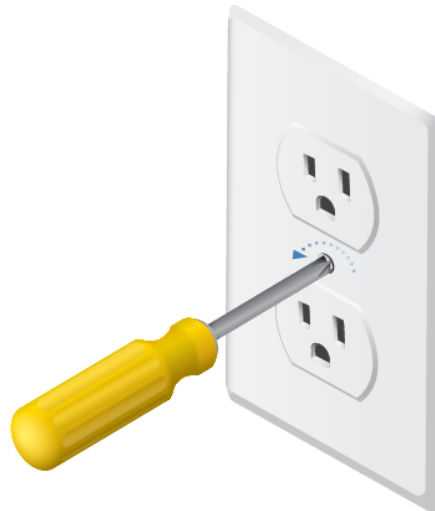
## UAP-BeaconHD Quick Start Guide



### Replacing the Wall Plate (Optional)

If the UAP-BeaconHD doesn't fit over the existing wall plate, install the included Wall Plate instead.

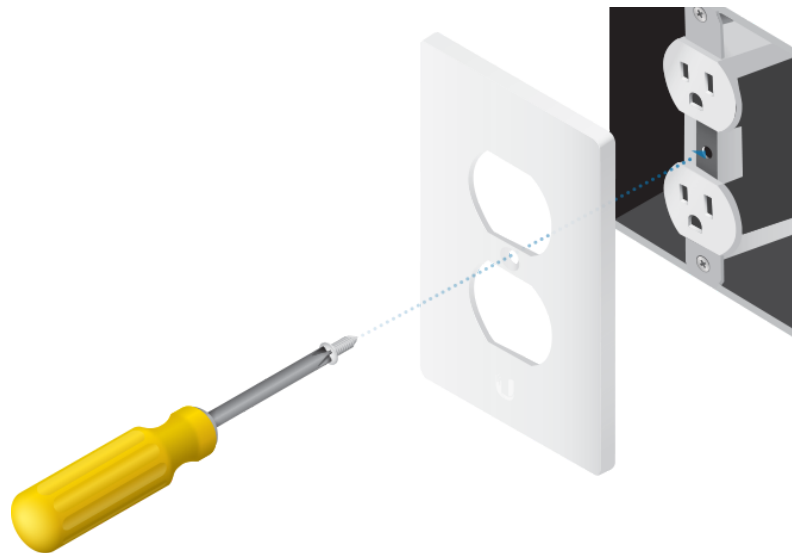
1.



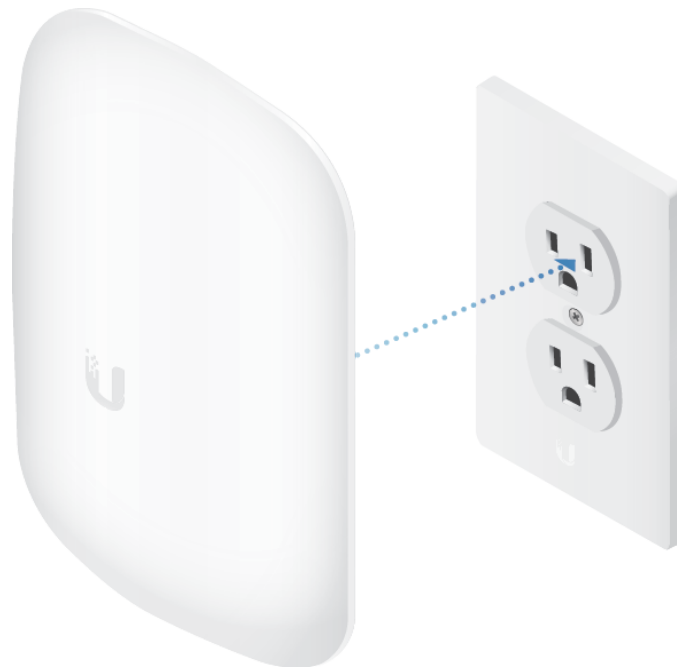
2.



## UAP-BeaconHD Quick Start Guide



3.



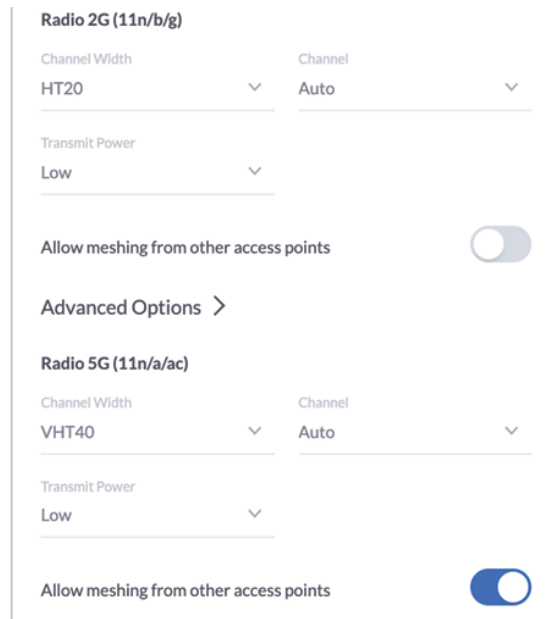
### Before You Begin

The UAP-BeaconHD is automatically discovered by the UniFi Network Controller of a UniFi AP or UDM that can hear the UAP-BeaconHD.

Before adopting the UAP-BeaconHD, access the configuration screen of the nearby UniFi AP or UDM. Ensure that Allow meshing from other access points is enabled (enabled by default).



## UAP-BeaconHD Quick Start Guide



## Adopting the UAP-BeaconHD

You have the following options:

- [“Using the UniFi Network App”](#)
- [“Using the UniFi Network Software”](#)

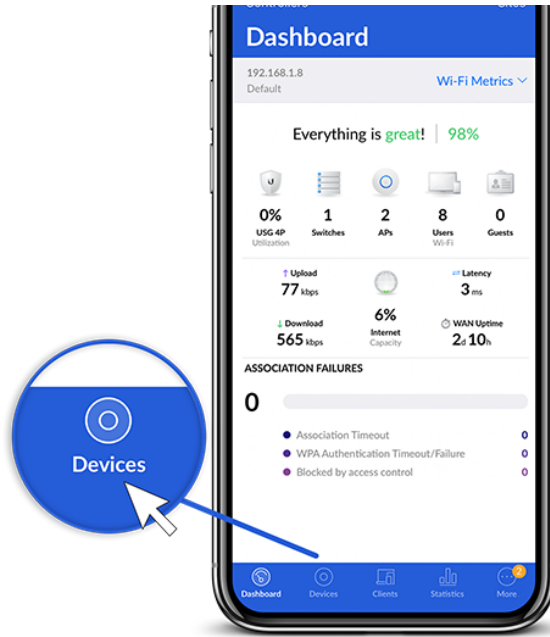
### Using the UniFi Network App

1.



2.

# UAP-BeaconHD Quick Start Guide



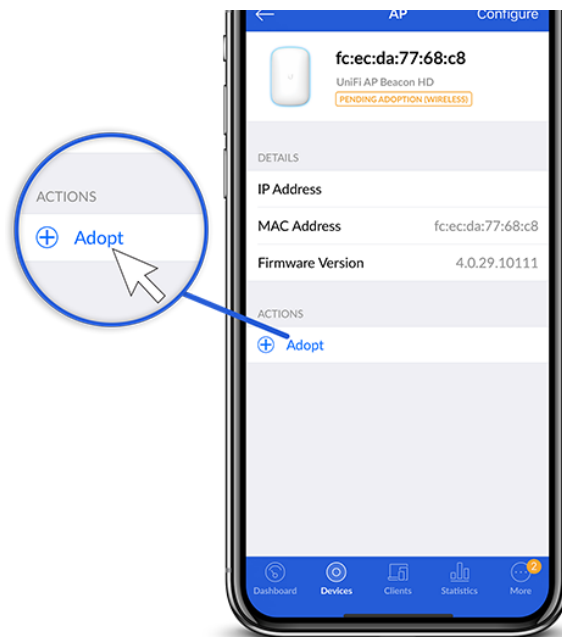
3.



4.



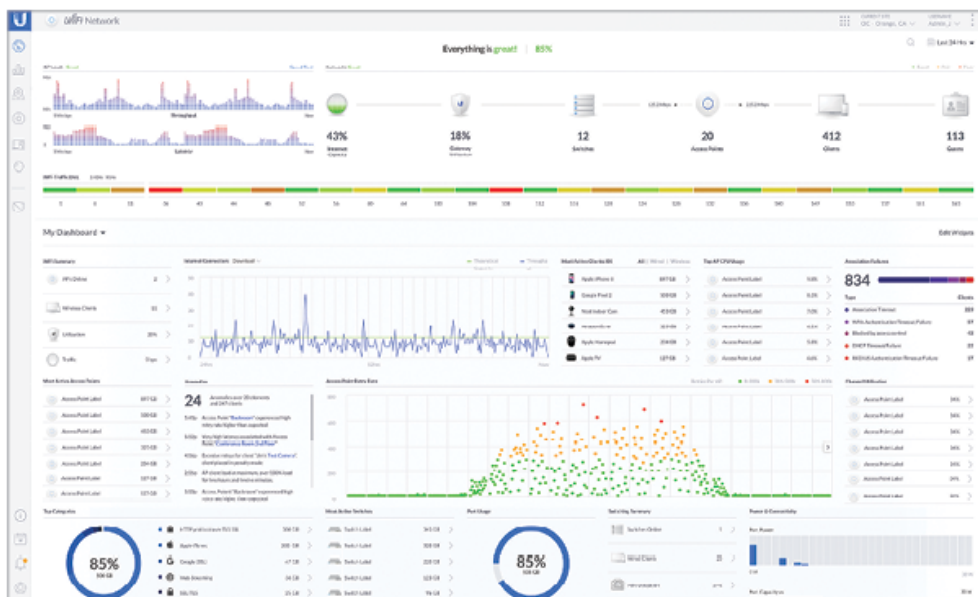
## UAP-BeaconHD Quick Start Guide



5. The System LED will turn blue to confirm that it has been successfully adopted.

## Using the UniFi Network Software

1. From the UniFi Network Controller dashboard, click Devices in the left menu bar.



2. On the Devices screen, locate the UAP-BeaconHD in the list of devices under the Model column. To adopt the UAP-BeaconHD, click Adopt.

## UAP-BeaconHD Quick Start Guide

DEVICE NAME	IP ADDRESS	STATUS	MODEL	VERSION	EVENTS	DOWN	UP	CHANNEL
uap0_A	10.10.10.73	Connected	UAP-AP-BeaconHD	4.0.2L-PRIS	1	34 GB	277 GB	# (Sig. 34 (a))
uap0_B	10.10.10.74	Connected	UAP-AP-BeaconHD	4.0.2L-PRIS	2	119 GB	107 GB	# (Sig. 44 (a))
uap0_C	10.10.10.75	Connected	UAP-AP-BeaconHD	4.0.2L-PRIS	1	41 GB	454 GB	11 (Sig. 141 (a))
uap0_D	10.10.10.76	Connected	UAP-AP-BeaconHD	4.0.2L-PRIS	1	474 GB	143 GB	11 (Sig. 157 (a))
uap0_E	10.10.10.77	Connected	UAP-AP-BeaconHD	4.0.2L-PRIS	2	47 GB	413 GB	11 (Sig. 44 (a))
uap0_F	10.10.10.7	Connected	UAP-AP-BeaconHD	4.0.2L-PRIS	1	239 GB	117 GB	# (Sig. 117 (a))
76 % (21 % (Base))	10.10.10.12	Connected	UAP-AP-BeaconHD	4.0.2L-PRIS	0	0 GB	0 GB	11 (Sig. 141 (a))

3. The System LED will turn blue to confirm that it has been successfully adopted.

## Specifications

UAP-BeaconHD	
Dimensions	169.7 x 112.15 x 32.2 mm (6.68 x 4.42 x 1.27")
Weight	260 g (9.17 oz)
Max. Power Consumption	11.5W
Power Method	AC
Power Supply	AC
Supported Voltage Range	100 - 240VAC, 0.3A Max., 50/60 Hz
LED	System Status
Operating Frequency	2.4 GHz 5 GHz
Max. TX Power (EIRP)	
2.4 GHz	24.8 dBm
5 GHz	30 dBm
Wi-Fi Standards	802.11 a/b/g/n/ac/ac-wave2
Wireless Security	WEP, WPA-PSK, WPA-Enterprise (WPA/WPA2, TKIP/AES)
Operating Temperature	-10 to 60° C (14 to 140° F)
Operating Humidity	5 to 95% Noncondensing
Certifications	FCC, IC

Antenna Gain of 4 Single-Polarity Antennas





## UAP-BeaconHD Quick Start Guide

Configuration	Frequency	Power
(2) Dual-Band	5 GHz	5 dBi
(2) Single-Band	5 GHz	5 dBi

## Safety Notices

1. Read, follow, and keep these instructions.
2. Heed all warnings.
3. Only use attachments/accessories specified by the manufacturer.



**WARNING:** Do not use this product in location that can be submerged by water.



**WARNING:** Avoid using this product during an electrical storm. There may be a remote risk of electric shock from lightning.

## Safety Notices

1. Read, follow, and keep these instructions.
2. Heed all warnings.
3. Only use attachments/accessories specified by the manufacturer.



**WARNING:** Do not use this product in location that can be submerged by water.



**WARNING:** Avoid using this product during an electrical storm. There may be a remote risk of electric shock from lightning.

## Electrical Safety Information

1. Compliance is required with respect to voltage, frequency, and current requirements indicated on the manufacturer's label. Connection to a different power source than those specified may result in improper operation, damage to the equipment or pose a fire hazard if the limitations are not followed.
2. There are no operator serviceable parts inside this equipment. Service should be provided only by a qualified service technician.

## Electrical Safety Information

1. Compliance is required with respect to voltage, frequency, and current requirements indicated on the manufacturer's label. Connection to a different power source than those specified may result in improper operation, damage to the equipment or pose a fire hazard if the limitations are not followed.
2. There are no operator serviceable parts inside this equipment. Service should be provided only by a qualified service technician.



## UAP-BeaconHD Quick Start Guide

### [ui.com/support/warranty](http://ui.com/support/warranty)

The limited warranty requires the use of arbitration to resolve disputes on an individual basis, and, where applicable, specify arbitration instead of jury trials or class actions.

## Limited Warranty

### [ui.com/support/warranty](http://ui.com/support/warranty)

The limited warranty requires the use of arbitration to resolve disputes on an individual basis, and, where applicable, specify arbitration instead of jury trials or class actions.

## Compliance

### FCC

Changes or modifications not expressly approved by the party responsible for compliance could void the user's authority to operate the equipment.

This device complies with Part 15 of the FCC Rules. Operation is subject to the following two conditions.

1. This device may not cause harmful interference, and
2. This device must accept any interference received, including interference that may cause undesired operation.

This equipment has been tested and found to comply with the limits for a Class B digital device, pursuant to Part 15 of the FCC Rules. These limits are designed to provide reasonable protection against harmful interference in a residential installation. This equipment generates, uses, and can radiate radio frequency energy and, if not installed and used in accordance with the instructions, may cause harmful interference to radio communications. However, there is no guarantee that interference will not occur in a particular installation. If this equipment does cause harmful interference to radio or television reception, which can be determined by turning the equipment off and on, the user is encouraged to try to correct the interference by one or more of the following measures:

- Reorient or relocate the receiving antenna.
- Increase the separation between the equipment and receiver.
- Connect the equipment into an outlet on a circuit different from that to which the receiver is connected.
- Consult the dealer or an experienced radio/TV technician for help.

This radio transmitter (FCC ID: SWX-UDMB) has been approved by FCC.

### ISED Canada

#### CAN ICES-3(B)/NMB-3(B)

This device complies with ISED Canada licence-exempt RSS standard(s). Operation is subject to the following two conditions:

1. This device may not cause interference, and
2. This device must accept any interference, including interference that may cause undesired operation of the device.



## UAP-BeaconHD Quick Start Guide

for harmful interference to co-channel mobile satellite systems.

### CAN ICES-3(B)/NMB-3(B)

Le présent appareil est conforme aux CNR d'ISDE Canada applicables aux appareils radio exempts de licence. L'exploitation est autorisée aux deux conditions suivantes :

1. l'appareil ne doit pas produire de brouillage;
2. l'appareil doit accepter tout brouillage radioélectrique subi, même si le brouillage est susceptible d'en compromettre le fonctionnement.

Le présent émetteur radio (IC : 6545A-UDMB) a été approuvé par ISDE Canada.

Les dispositifs fonctionnant dans la bande 5150-5250 MHz sont réservés uniquement pour une utilisation à l'intérieur afin de réduire les risques de brouillage préjudiciable aux systèmes de satellites mobiles utilisant les mêmes canaux.

### IMPORTANT NOTE:

#### Radiation Exposure Statement:

- This equipment complies with radiation exposure limits set forth for an uncontrolled environment.
- This equipment should be installed and operated with minimum distance 20 cm between the radiator and your body.
- This transmitter must not be co-located or operating in conjunction with any other antenna or transmitter.

### AVIS IMPORTANT :

#### Déclaration sur l'exposition aux rayonnements :

- Cet équipement est conforme aux limites prévues pour l'exposition aux rayonnements dans un environnement non contrôlé.
- Lors de l'installation et de la mise en fonctionnement de l'équipement, assurez-vous qu'il y ait une distance minimale de 20 cm entre l'élément rayonnant et vous.
- Cet émetteur ne doit être installé à proximité d'aucune autre antenne ni d'aucun autre émetteur, et ne doit être utilisé conjointement à aucun autre de ces appareils.

## Compliance

### FCC

Changes or modifications not expressly approved by the party responsible for compliance could void the user's authority to operate the equipment.

This device complies with Part 15 of the FCC Rules. Operation is subject to the following two conditions.

1. This device may not cause harmful interference, and



## UAP-BeaconHD Quick Start Guide

This equipment has been tested and found to comply with the limits for a Class B digital device, pursuant to Part 15 of the FCC Rules. These limits are designed to provide reasonable protection against harmful interference in a residential installation. This equipment generates, uses, and can radiate radio frequency energy and, if not installed and used in accordance with the instructions, may cause harmful interference to radio communications. However, there is no guarantee that interference will not occur in a particular installation. If this equipment does cause harmful interference to radio or television reception, which can be determined by turning the equipment off and on, the user is encouraged to try to correct the interference by one or more of the following measures:

- Reorient or relocate the receiving antenna.
- Increase the separation between the equipment and receiver.
- Connect the equipment into an outlet on a circuit different from that to which the receiver is connected.
- Consult the dealer or an experienced radio/TV technician for help.

This radio transmitter (FCC ID: SWX-UDMB) has been approved by FCC.

## ISED Canada

### CAN ICES-3(B)/NMB-3(B)

This device complies with ISED Canada licence-exempt RSS standard(s). Operation is subject to the following two conditions:

1. This device may not cause interference, and
2. This device must accept any interference, including interference that may cause undesired operation of the device.

This radio transmitter (IC: 6545A-UDMB) has been approved by ISED Canada.

The device for operation in the band 5150-5250 MHz is only for indoor use to reduce the potential for harmful interference to co-channel mobile satellite systems.

### CAN ICES-3(B)/NMB-3(B)

Le présent appareil est conforme aux CNR d'ISDE Canada applicables aux appareils radio exempts de licence. L'exploitation est autorisée aux deux conditions suivantes :

1. l'appareil ne doit pas produire de brouillage;
2. l'appareil doit accepter tout brouillage radioélectrique subi, même si le brouillage est susceptible d'en compromettre le fonctionnement.

Le présent émetteur radio (IC : 6545A-UDMB) a été approuvé par ISDE Canada.

Les dispositifs fonctionnant dans la bande 5150-5250 MHz sont réservés uniquement pour une utilisation à l'intérieur afin de réduire les risques de brouillage préjudiciable aux systèmes de satellites mobiles utilisant les mêmes canaux.

## IMPORTANT NOTE:

### Radiation Exposure Statement:

- This equipment complies with radiation exposure limits set forth for an uncontrolled environment.



## UAP-BeaconHD Quick Start Guide

- This transmitter must not be co-located or operating in conjunction with any other antenna or transmitter.

### AVIS IMPORTANT :

#### Déclaration sur l'exposition aux rayonnements :

- Cet équipement est conforme aux limites prévues pour l'exposition aux rayonnements dans un environnement non contrôlé.
- Lors de l'installation et de la mise en fonctionnement de l'équipement, assurez-vous qu'il y ait une distance minimale de 20 cm entre l'élément rayonnant et vous.
- Cet émetteur ne doit être installé à proximité d'aucune autre antenne ni d'aucun autre émetteur, et ne doit être utilisé conjointement à aucun autre de ces appareils.

### Online Resources



### Online Resources

